



>>Type of use (\*)

Protection against cold and foul weather. (\*\*) Industry. Agriculture. Public works sector. Receiving, warehousing processes. Maintenance of parks and gardens. Building and construction. Fork-lift drivers. Artisans...

>> Technical features

- ✓ **Description: 3 x 1 garment.** Made of a outer parka with no padding and a warm and comfortable inner detachable Polar jacket. Numerous pockets. Retro-reflective piping. Multi-use keyholder.
- ✓ **Parka:** outshell in 100 % polyester Pongee ripstop 7 x 7 mm with PVC coating. Patch reinforcement fabric: 100% polyester Oxford with PVC coating, 360 gsm. Lining: 100 % polyester polyester Taffeta. Taped seams. Features a zip access for print.
- ✓ **Detachable inner jacket:** 100% Polar fleece polyester, 96F, 280 gsm.
- ✓ **Waterproof : 8000 mm.**
- ✓ **Colour:** black/grey/red.
- ✓ **Sizes and packings:**

	<b>M, L, XL, 2XL</b>	<b>S, 3XL</b>	
Carton	10 units	5 units	
Bundle	1 unit	1 unit	



Parka

Detachable Polar jacket

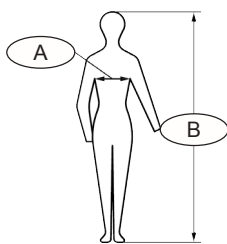


Learn more: [www.singer.fr](http://www.singer.fr)

>> Advantages

- ✓ Practical: 3 x 1 for various uses.
- ✓ Patch reinforcements on weak parts (Oxford polyester fabric 360 gsm) for an extended garment service life.
- ✓ Very functional concept (pockets, pen pockets, elastic adjustments...).
- ✓ Security: retro-reflective pipings.

size	Chest (cm) (A)	Height (cm) (B)
S	84-96	160-172
M	92-104	166-178
L	100-112	172-184
XL	108-120	180-192
2XL	116-128	188-198
3XL	126-138	192-202



>> Conformity

This model complies with **European Regulation (EU) 2016/425** on Personal Protective Equipment (PPE). **Category I item.**

**Regulation (EU) 2016/425 (\*\*).**

The PPE is subject to the conformity assessment procedure based on internal production control (**module A**) set out in Annex IV (**Minor risks**).

Download the EU declaration of conformity on: <http://docs.singer.fr>

(\*\*) ANNEX I, Category I, e) : Atmospheric conditions that are not of an extreme nature.

Your distributor **SINGER® SAFETY**

